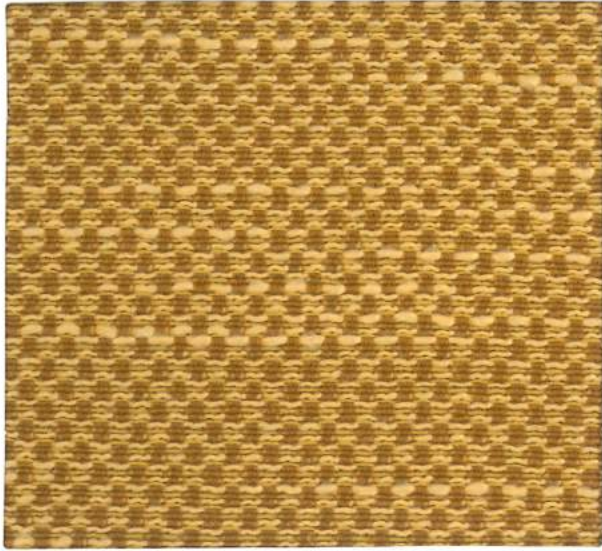


Life Made Easy

Performance Fabric Collection





Tome - Sundance



Archetype - Bourbon



Castillo - Buff



Dorset - Camel



Archetype - Hemp



Archetype - Vermillion



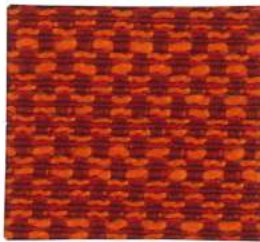
Purl - Spice



Dorset - Copper



Castillo - Red



Tome - Poppy



Purl - Root



Archetype - Cafe



Tome - Walnut



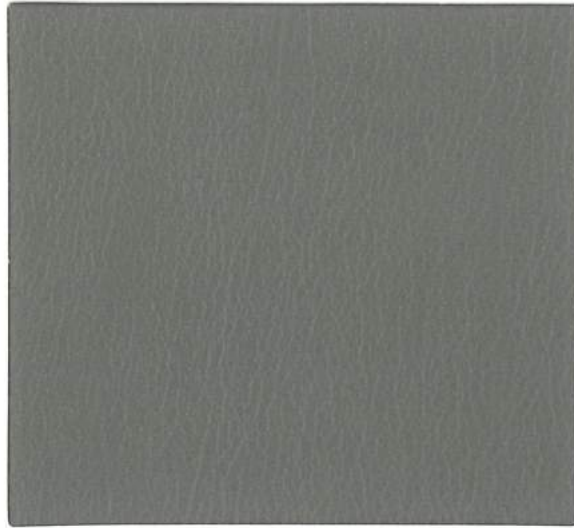
Dorset - Soda



Castillo - Java



Dorset - Taupe



Castillo - Metal



Dorset - Silver Gray



Archetype - Quartz



Purl - Icicle



Purl - Hearthstone



Purl - Steel Wool



Tome - Charcoal



Tome - Sepia



Dorset - Ash



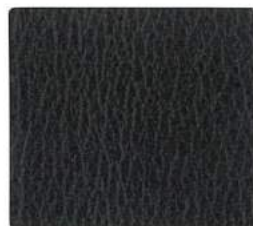
Archetype - Smoke



Dorset - Charcoal



Purl - Dark Blue



Castillo - Black



Dorset - Black



Archetype - Herbal



Castillo - Honeydew



Castillo - Pistachio



Dorset - Avocado



Tome - Sorrel



Purl - Stream



Tome - Jewel



Dorset - Ocean Blue



Castillo - Breezy



Dorset - Denim



Castillo - Batik



Dorset - Blueberry



Tome - Sapphire



Purl - Azure



Archetype - Admiral

Fabric Specification and Technical Data

	Tome	Dorset	Archetype
Content:	Polyester 100%	Polyester 100%	Polyester 79%, Rayon 21%
Backing:	Synthetic Latex Blend	Polyester 100%	Polyester 100%
Finish:	i-clean™	i-clean™	i-clean™
Width:	54"	54"	54"
Repeat: Vertical: Horizontal:	n/a	n/a	n/a
Cleaning Code:	W	W	W
Abrasion:	95,000	55,000	70,000
Weight:	10.61 ozs.	17.28 ozs.	9.0 ozs.
Flammability: Pass	CA 117-2013 UFAC Class I NFPA 260 Class I	CA 117-2013 UFAC Class I NFPA 260 Class I ASTM E-84 Class I	CA 117-2013 UFAC Class I NFPA 260 Class I
Lightfastness:	40 hours Class 4	40 hours Class 4	40 hours Class 4
Color Fastness:	Wet: Class 3 Dry: Class 4	Wet: Class 3 Dry: Class 4	Wet: Class 3 Dry: Class 4
Break Strength: ASTM D5034	Warp: 238 lbs. Weft: 228 lbs.	Warp: 97 lbs. Weft: 94 lbs.	Warp: 152 lbs. Weft: 116 lbs.
Seam Slippage: ASTM D4034	Warp: 68 lbs. Weft: 48 lbs.	Warp: 41 lbs. Weft: 38 lbs.	Warp: 52 lbs. Weft: 55 lbs.
Pilling Resistance:	Class 4	Class 4	Class 4

These fabrics are made in China.

Fabric Specification and Technical Data

	Castillo	Purl
Content:	Polyurethane 100%	Polyester 80% Acrylic 20%
Backing:	Polyester 87% Cotton 13%	Synthetic Latex Blend
Finish:	Antimicrobial & i-clean™	i-clean™
Width:	54"	54"
Repeat: Vertical: Horizontal:	n/a	n/a
Cleaning Code:	W	W
Abrasion:	200,000	100,000
Weight:	22.9 ozs.	24.4 ozs.
Flammability: Pass	CA 117-2013 UFAC Class I NFPA 260 Class I MVSS 302	CA 117-2013 UFAC Class I NFPA 260 Class I
Lightfastness:	100 hours Class 4	40 hours Class 4
Color Fastness:	Wet: Class 5 Dry: Class 5	Wet: Class 3 Dry: Class 4
Break Strength: ASTM D5034	Warp: 141 lbs. Weft: 78 lbs.	Warp: 224 lbs. Weft: 148 lbs.
Seam Slippage: ASTM D4034	Warp: 50 lbs. Weft: 69 lbs.	Warp: 43 lbs. Weft: 41 lbs.
Pilling Resistance:	Class 5	Class 3

These fabrics are made in China.

CULP
CONTRACT

For samples or further information, please contact:

Culp, Inc.
Contract Fabrics
1823 Eastchester Drive
High Point, NC 27265
Phone: (336)-889-5161
Fax: (336)-899-7848
www.culpcontract.com

I-31-2018