

Sauder Education®

PVC-Free Solutions

MOMENTUM
TEXTILES



Groove Stone



Vapor



Intense



Harbor



Zest



Digital



Expanse



Nifty Koi



Sun



Wasabi



Pool



Reed



Trek



Rain



Solstice



Relic



Dynamo



Surge



Hudson



Slate



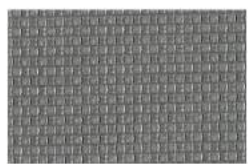
Eon Atlantic



Coquette



Hydra



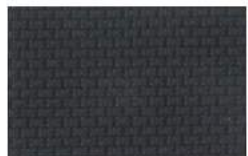
Mineral



Spring



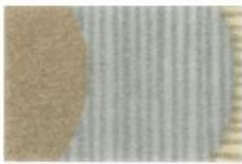
Blaze



Typographic



Silica Cusp Pier



Coir



Festive



Spa



Java



Silica Checker Maple



Sepia



Hedge



Sumac



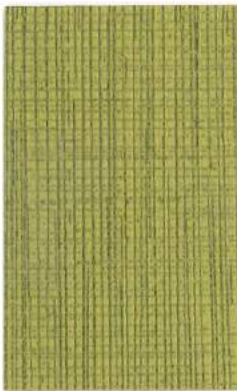
Flax



Maple



Lagoon



Beeline Sprout



Sundance



Fossil



Geyser



Cork



Tidal



Forge



Oriole



Portobello



Parade



Myth



Walnut



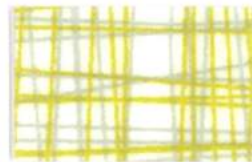
Eclipse



Silica Stride Resort



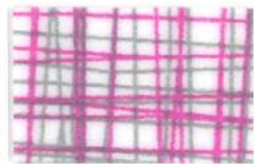
Ecru



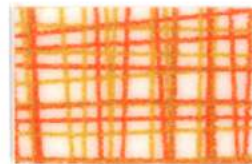
Citrus



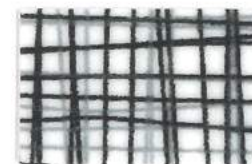
Marble



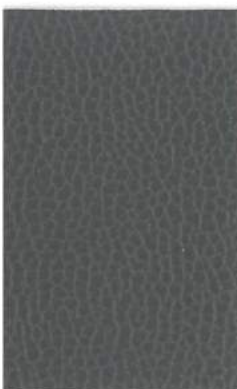
Beam



Koi



Contrast



Silica Leather Shadow



Dove



Marigold



Aloe



Denim



Saddle



Mink



Driftwood



Hyacinth



Rustic



Ink



Umber



Eclipse

PVC-Free Solutions

54" Pattern	Fiber Content & Backing	Abrasion (D.R.)	Light-fastness	Approx. Repeats	Cleaning Code
BEELINE ☛ ☛ ☛ ☛ ☛*	100% Polyurethane / PVC Free Polyester Backing	500,000	(Cl. 4.5) 200 Hrs.		W BC (4:1)
EON ☛ ☛ ☛ ☛ ☛*	100% Polyurethane / PVC Free Polyester Backing	500,000	(Cl. 4.5) 200 Hrs.	5/8" L, 5/8" W	W BC (4:1)
GROOVE ☛ ☛ ☛ ☛ ☛*	54% Polyester, 46% Polyurethane / PVC Free Polyester Backing	500,000	(Cl. 3.5) 200 Hrs.	22 7/16" L, 14 7/8" W	W BC (4:1)
NIFTY ☛ ☛ ☛ ☛ ☛*	100% Polyurethane / PVC Free Polyester Backing	500,000	(Cl. 4.5) 200 Hrs.		W BC (4:1)
SILICA CHECKER ☛ ☛ ☛ ☛ ☛*	100% Silicone Polyester Backing	500,000	(Cl. 4.5) 200 Hrs.	6 1/8" L, 12 3/8" W	WS BC (4:1)
SILICA CUSP ☛ ☛ ☛ ☛ ☛*	100% Silicone Polyester Backing	500,000	(Cl. 4.5) 200 Hrs.	12 1/2" L, 12 3/8" W	WS BC (4:1)
SILICA LEATHER ☛ ☛ ☛ ☛ ☛*	100% Silicone Polyester Backing	210,000	(Cl. 4) 200 Hrs.		WS BC (4:1)
SILICA STRIDE ☛ ☛ ☛ ☛ ☛*	100% Silicone Polyester Backing	500,000	(Cl. 4.5) 200 Hrs.	24 3/4" L, 24 3/4" W	WS BC (4:1)

All Patterns meet CA Bulletin 117-2013.

Primary Application: Upholstery Seating.

*ACT[®] Registered Certification Marks

EXPLANATION OF ACT ICONS FOR UPHOLSTERY

FIRE RETARDANCY

Flammability testing determined as fabric's resistance to burning.



PASSES

California 117-2013

COLORFASTNESS TO WET & DRY CROCKING

Colorfastness to wet & dry crocking refers to the rubbing off of color from the fabric onto clothing, hands or other materials and can occur under wet or dry conditions.



PASSES

AATCC 8-1974 Dry Crocking, Class 4 minimum;
Wet Crocking,
Class 3 minimum

COLORFASTNESS TO LIGHT

Colorfastness to light is the degree to which fabric will retain its color when exposed to light.



PASSES

AATCC 16A-1974 or AATCC 16E-1976; Class 4 minimum
at 40 hours

NOTE: Class 4 minimum at 60 hours is recommended for direct sunlight exposure situations

PHYSICAL PROPERTIES

3 physical property tests include: brush pill test to determine a fabric's pilling. Breaking/tensile strength is the ability of a fabric to withstand tension without breaking or tearing. Seam slippage is the pulling apart of fabrics at the seams.



PASSES

Brush Pill ASTM D3511, 3-4 minimum
Breaking Strength ASTM D3597-D1682-64 (1975)
50 lbs. minimum in warp & weft
Seam Slippage ASTM D3597-D434-75 25 lbs. minimum in warp & weft

ABRASION

Abrasion is the ability of a fabric to withstand damage from wear and rubbing. There is a general contract specification as well as a heavy duty specification.



General Contract

PASSES

ASTM 3597 modified (#10 cotton duck);
15,000 double rubs Wyzenbeek Method



Heavy Duty

ASTM 3597 modified (#10 cotton duck);
30,000 double rubs Wyzenbeek Method or
ASTM D4966 (with 21 oz. weight);
40,000 rubs Martindale Method

CLEANING CODE DEFINITIONS

WS: Water-based cleaning agents or foam.

W: Water-based foam or cleaner.

BC: Bleach Cleanable



GREENGUARD Gold Certified. CA Section 01350 compliant.
Eligible for CHPS Low-Emitting Material Credits.

Sauder Education
930 W. Barre Road
Archbold, OH 43502
800.537.1530 ph
419.446.4945 fax
sales@saudereducation.com
www.saudereducation.com

5CLICKS

In 5 simple clicks, you can find hundreds of pre-approved, in grade, and in stock fabrics.

Additional patterns and colors are available in Momentum Textiles Library Books or visit us at memosamples.com

Memo samples are available on request: call, fax, or visit our Web site.

MOMENTUM
TEXTILES

800-366-6839
memosamples.com