

VINYL III COORDINATES





CONTEMPO FR
CN-003 Willow



CONTEMPO FR
CN-013 Oregano



CONTEMPO FR
CN-014 Surf



CONTEMPO FR
CN-023 Teal



IMAGES FR
IM-013 Wasabi



WILLOW FR
WI-003 Green Tea



CURLICUE FR
CC-013 Basil



MICRO DOT FR
MD-013 Fern



LINEN FR
LN-003 Green Tea



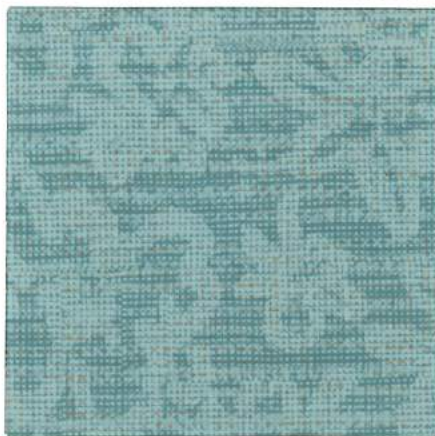
BLOCKS FR
BK-003 Meadow



CHARETTE FR
CH-003 Hedge



CHARETTE FR
CH-024 Aqua



IMAGES FR
IM-024 Turquoise



MICRO DOT FR
MD-024 Turquoise



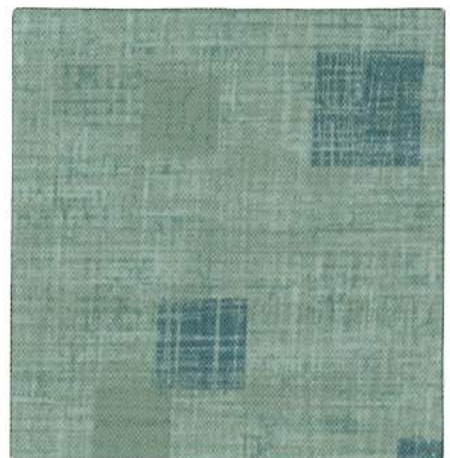
LINEN FR
LN-014 Aquamarine



CURLICUE FR
CC-024 Aqua



WILLOW FR
WI-014 Aquamarine



BLOCKS FR
BK-004 Lagoon



DURANGO FR
DU-023 Jade



DURANGO FR
DU-013 Basil



DURANGO FR
DU-033 Calypso



DURANGO FR
DU-014 Cyan



DURANGO FR
DU-024 Aegean

Additional colors are available. Please refer to the Mayer Fabrics website.



CONTEMPO FR
CN-004 Denim



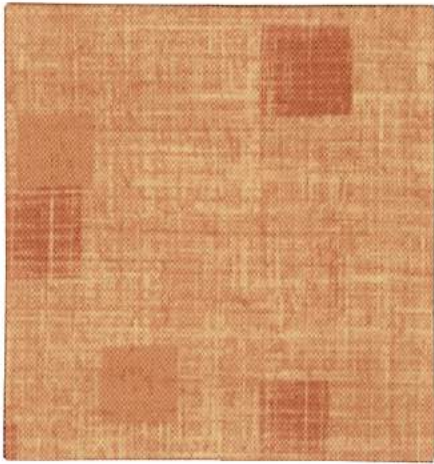
CONTEMPO FR
CN-019 Caramel



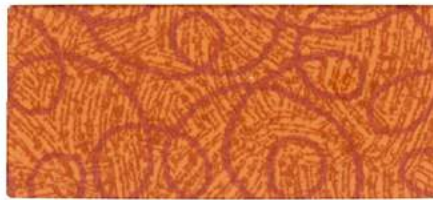
CONTEMPO FR
CN-009 Sunset



CONTEMPO FR
CN-001 Scarlet



BLOCKS FR
BK-009 Grove



CURLICUE FR
CC-009 Tangerine



IMAGES FR
IM-009 Tangerine



WILLOW FR
WI-009 Tangerine



CHARETTE FR
CH-001 Paprika



LINEN FR
LN-019 Russet



MICRO DOT FR
MD-019 Cinnamon



CHARETTE FR
CH-014 Cerulean



IMAGES FR
IM-004 Marina



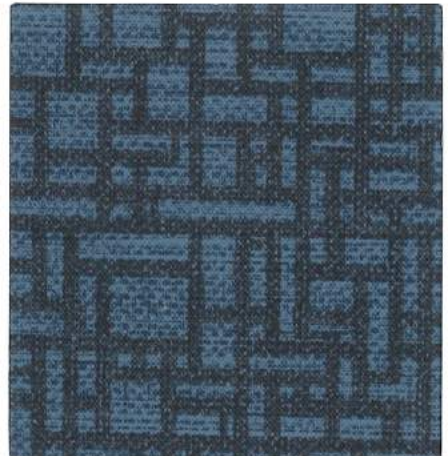
MICRO DOT FR
MD-004 Blue Ice



LINEN FR
LN-004 Marine



CURLICUE FR
CC-014 Azure



CHARETTE FR
CH-004 Sapphire



WILLOW FR
WI-004 Marine



DURANGO FR
DU-004 Sapphire



DURANGO FR
DU-019 Sepia



DURANGO FR
DU-029 Cordovan

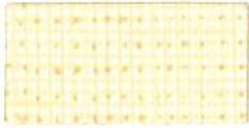


DURANGO FR
DU-009 Tangelo



DURANGO FR
DU-001 Paprika

Additional colors are available. Please refer to the Mayer Fabrics website.



CONTEMPO FR
CN-007 Bisque



CONTEMPO FR
CN-017 Buff



CONTEMPO FR
CN-006 Greige



CONTEMPO FR
CN-000 Espresso



IMAGES FR
IM-007 Almond



WILLOW FR
WI-002 Maize



CHARETTE FR
CH-007 Alabaster



MICRO DOT FR
MD-017 Alabaster



LINEN FR
LN-002 Maize



BLOCKS FR
BK-007 Seashore



CURLICUE FR
CC-012 Filigree



CHARETTE FR
CH-002 Caramel



WILLOW FR
WI-007 Natural



LINEN FR
LN-007 Natural



MICRO DOT FR
MD-000 Latte



IMAGES FR
IM-000 Walnut



CURLICUE FR
CC-006 Graphite



CHARETTE FR
CH-000 Bark



DURANGO FR
DU-017 Alabaster



DURANGO FR
DU-007 Natural



DURANGO FR
DU-010 Bombay

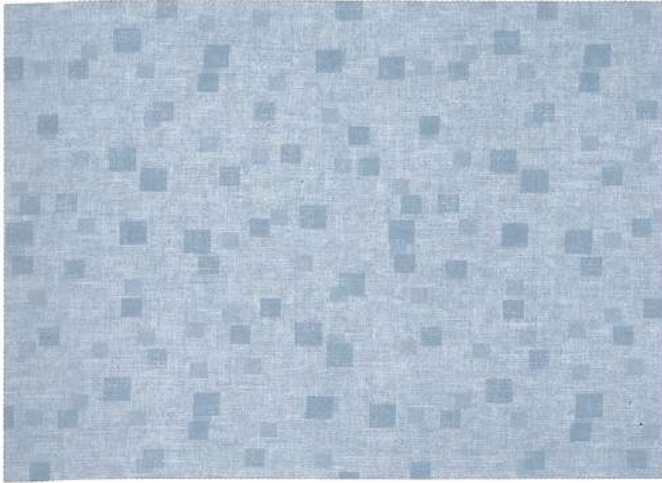


DURANGO FR
DU-000 Cocoa

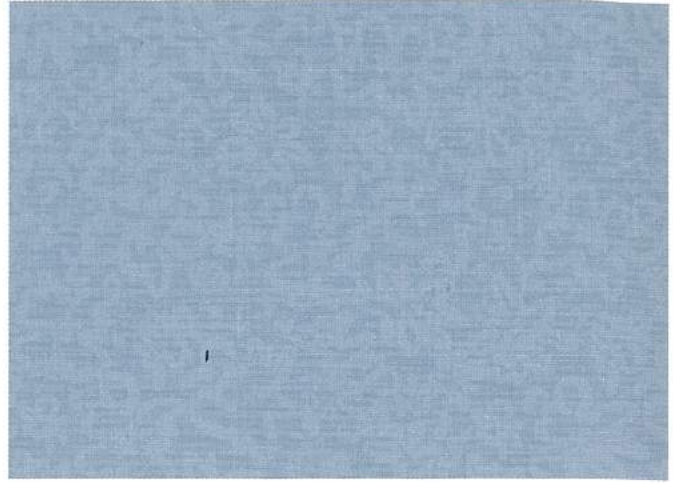


DURANGO FR
DU-006 Black

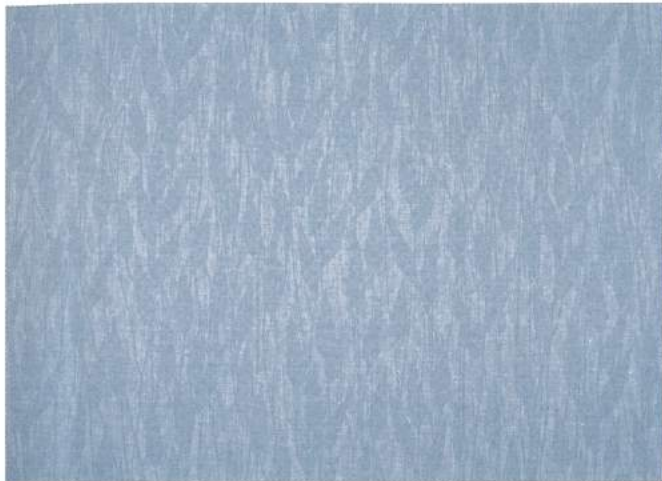
Additional colors are available. Please refer to the Mayer Fabrics website.



BLOCKS - Approx. Repeat: 9.25" H, 8.5" V Random Match



IMAGES - Approx. Repeat: 6" H, 6" V Random Match



WILLOW - Approx. Repeat: 27" H, 19" V Random Match

CARE AND CLEANING INFORMATION

WS: Water/Solvent Cleaner – Spot clean, with a mild solvent, an upholstery shampoo, or the foam from a mild detergent. When using a solvent or dry cleaning product, follow instructions carefully and clean only in a well-ventilated room. Avoid any product that contains carbon tetrachloride or other toxic materials. With either method, pretest a small area before proceeding.

Normal Care and Cleaning: Remove ordinary dirt and smudges with a mild soap and water solution and a clean, soft cloth or towel. Dry with a soft, lint-free cloth or towel. **CAUTION:** The use of upholstery "conditioners" or "protectants" is not recommended and should be avoided on vinyl upholstery treated with **PreFixx**[®] protective finish.

Disinfecting: Upholstery with **PreFixx**[®] protective finish can be disinfected with a diluted household bleach (sodium hypochlorite) solution (1:10 bleach to water ratio). Rinse with fresh water. Dry with a clean towel.

BC: Bleach Cleanable - 1 part bleach, 9 parts water = 10% bleach, 90% water solution. Do not clean/disinfect fabric for longer than 10 minutes using the 10% bleach solution. Always rinse promptly with clean water after applying the bleach solution. Failure to do so will void any and all warranties.

Special Cleaning Problems

Although performance fabrics treated with **PreFixx**[®] protective finish are resistant to most common stains, the dyes and pigments in some staining agents have the ability to create a permanent stain if not treated properly. To clean difficult stains from upholstery treated with **PreFixx**[®] protective finish, locate the staining agent in the lists below and follow the corresponding recommended cleaning method. For best results, treat all stains immediately.

Cleaning Tip: To determine the method and type of cleaners, the source of the stain should be identified.

Staining Agents: Baby oil, ketchup, chocolate, motor oil, olive oil, grape juice, urine, blood, hair oil tonic, tea, coffee and betadine. Use Method 1.

Staining Agents: Eye shadow, crayon and grease, tobacco tar (nicotine), permanent felt tip marker, yellow mustard, lipstick, ballpoint pen and spray paint. Use Method 1. If stains remain, use Method 2.

The recommended cleaners used in Cleaning Methods 1 and 2 are progressively more aggressive. Often, it is better to begin with the least aggressive cleaner and move to the next strongest only if the stain remains. NEVER EXCEED a staining agent's recommended cleaner or cleaning method, however.

Method 1: Use Formula 409[®] All-Purpose Spray Cleaner or Fantastik[®] Spray Cleaner with a soft cloth or damp sponge. Rinse area with fresh water then dry with a clean, lint-free cloth.

Method 2: Use a solvent-type cleaner*, such as rubbing (isopropyl) alcohol 91%. Rinse cleaned area with fresh water then dry with a clean, lint-free cloth. If the stain persists after six rubs, the stain has set and probably cannot be removed. Rinse cleaned area with fresh water, then dry with a clean, lint-free cloth.

*CAUTION: Some solvents are highly flammable. Exercise proper care in cleaning and notify personnel in area of danger. Wear rubber gloves during all cleaning activities. Use caution in cleaning around buttons, stitching and wooden or decorative trim, since these solvents could seriously damage such areas.

FORMULA 409 is a registered trademark of the Chlorox Company

FANTASTIK is a registered trademark of Dow Chemical Products Inc.

For detailed care and cleaning information for each pattern, please refer to the Mayer Fabrics website or contact customer service.

SPECIFIC TREATMENTS

PreFixx[®] Protective Finish Anti-Microbial/Anti-Bacterial Protection Anti-Stain Finish/Easily Cleaned Anti-Static Slip Finish Urine Stain Resistant Mildew Resistant Superior Disinfectant Resistance Oil Resistant Sulfide Stain Resistant/All Colors UV Stabilized Pigments

PreFixx[®] The first protective finish that starts where other finishes finish. With **PreFixx** protection, it is possible to remove stains that could never be removed before. Now, with cost-proven stain resistance and cleanability, plus superior abrasion resistance, **PreFixx** protected vinyls protect you from high maintenance and frequent reupholstery costs.

TECHNICAL INFORMATION

Vinyl III Coordinates

ACT Registered Certification Marks

Pattern 54*	Content and Backing	GREENGUARD Certified	Weight/Linear Yd.	Pattern Repeat	Finish	Abrasion Wyzenbeek	Light Fastness	Flammability	Cleaning
BLOCKS FR <i>Directional</i>	100% Vinyl Backing: Polyester Knit	Certified	28 oz.	9.25" H 8.5" V Random Match	PreFixx® - Ink Resistant	1,300,000 Double Rubs	650 hours	Cal. 117-2013 NFPA 260 (Equiv. to UFAC) (see below)	Refer to cleaning section
CHARETTE FR <i>Directional</i>	100% Vinyl Backing: Polyester Knit	Certified	28 oz.	17" H 17" V Random Match	PreFixx® - Ink Resistant	1,300,000 Double Rubs	650 hours	Cal. 117-2013 NFPA 260 (Equiv. to UFAC) (see below)	Refer to cleaning section
CONTEMPO FR <i>Directional</i>	100% Vinyl Backing: Polyester Knit	Certified	28 oz.	Non- Matching	PreFixx® - Ink Resistant	1,300,000 Double Rubs	650 hours	Cal. 117-2013 NFPA 260 (Equiv. to UFAC) (see below)	Refer to cleaning section
CURLICUE FR <i>Directional</i>	100% Vinyl Backing: Polyester Knit	Certified	28 oz.	Non- Matching	PreFixx® - Ink Resistant	1,300,000 Double Rubs	650 hours	Cal. 117-2013 NFPA 260 (Equiv. to UFAC) (see below)	Refer to cleaning section
DURANGO FR	100% Vinyl Backing: 100% Polyester	Certified	30 oz.	None	PreFixx® - Ink Resistant	1,000,000 Double Rubs	650 hours	Cal. 117-2013 NFPA 260 (Equiv. to UFAC) (see below)	Refer to cleaning section
IMAGES FR <i>Directional</i>	100% Vinyl Backing: Polyester Knit	Certified	28 oz.	6" H 6" V Random Match	PreFixx® - Ink Resistant	1,300,000 Double Rubs	650 hours	Cal. 117-2013 NFPA 260 (Equiv. to UFAC) (see below)	Refer to cleaning section
LINEN FR <i>Directional</i>	100% Vinyl Backing: Polyester Knit	Certified	28 oz.	Non- Matching	PreFixx® - Ink Resistant	1,300,000 Double Rubs	650 hours	Cal. 117-E2013 NFPA 260 (Equiv. to UFAC) (see below)	Refer to cleaning section
MICRO DOT FR <i>Directional</i>	100% Vinyl Backing: Polyester Knit	Certified	28 oz.	.25" H .25" V	PreFixx® - Ink Resistant	1,300,000 Double Rubs	650 hours	Cal. 117-2013 NFPA 260 (Equiv. to UFAC) (see below)	Refer to cleaning section
WILLOW FR <i>Directional</i>	100% Vinyl Backing: Polyester Knit	Certified	28 oz.	27" H 19" V Random Match	PreFixx® - Ink Resistant	1,300,000 Double Rubs	650 hours	Cal. 117-2013 NFPA 260 (Equiv. to UFAC) (see below)	Refer to cleaning section

May comply with California Technical Bulletin 133 when combined with appropriate components.

REDUCED ENVIRONMENTAL IMPACT

GREENGUARD Certified products are tested for low chemical emissions to standard UL 2818. For more information, visit UL.com/gg

FLAMMABILITY

Blocks FR, Charette FR, Contempo FR, Curlicue FR, Durango, Images FR, Linen FR, Micro Dot FR, Willow FR

BIFMA	Passes	FMVSS 302	Passes
Boston Fire Dept. Code (BFD 1X-1)	Passes	NFPA 701 (small scale)	Passes
FAA/FAR 25.853(a) & Appendix F Part I(a)(ii)	Passes	NY & NJ Port Authority	Passes
Fed. Spec. CID A-A-2950/supersedes CCC-A-680A	Passes		

Blocks FR, Curlicue FR, Linen FR, Micro Dot FR, Willow FR
ASTM E84 (Adhered) Class 1 or A; IMO A.652(16) 8.2 & 8.3

ADDITIONAL INFORMATION

Custom Capabilities: All patterns can be custom colored. Minimum yardage applies.

Memo Samples: Please keep this card intact. Individual memo samples can be ordered on our website or by contacting customer service.

Color Matching: Mayer Fabrics always attempts to ship a satisfactory commercial match. Because of industry standard dye lot variation, colors may not match exactly.

Specifications: Specifications are correct at the time of printing. Current specifications are available on our website.

For information or assistance with products or services, call us at 800.428.4415 or refer to the Mayer Fabrics website.

GSA Contract #GS-28F-0022P



MAYERFABRICS

† 317.267.2626 or 800.428.4415 ‡ 317.267.2629 or 877.7SAMPLE

www.mayerfabrics.com
©2015 Mayer-Paetz, Inc.

V3CCD 50115