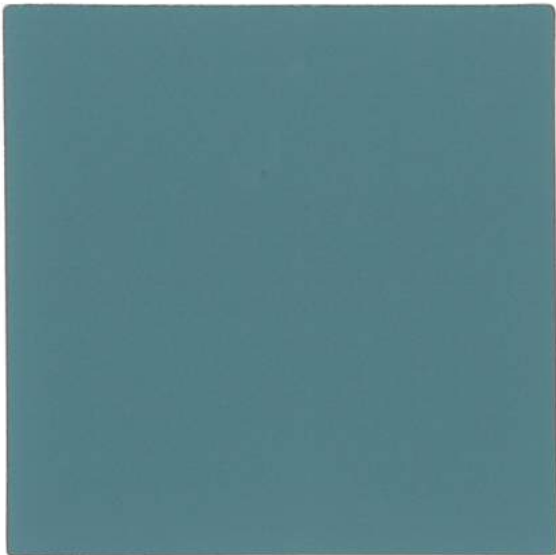


Sauder Education®

High Performance
Non-Woven Upholstery 2

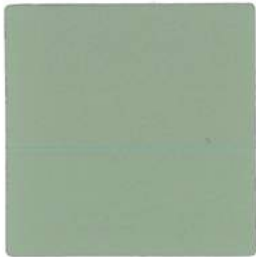
maharam



Pitch, 011 Voyage



Lineage, 009 Cloud



Pitch, 010 Ridge



Pitch, 030 Buff



Lineage, 011 Rattan



Lineage, 002 Tussock



Pitch, 008 Fairway



Pitch, 026 Tumbleweed



Lineage, 012 Bronze



Lineage, 008 Horizon



Pitch, 009 Chive



Pitch, 029 Subtle



Lineage, 003 Rattle



Lineage, 007 Merchant



Pitch, 013 Riviera



Pitch, 018 Fog



Lineage, 004 Elk

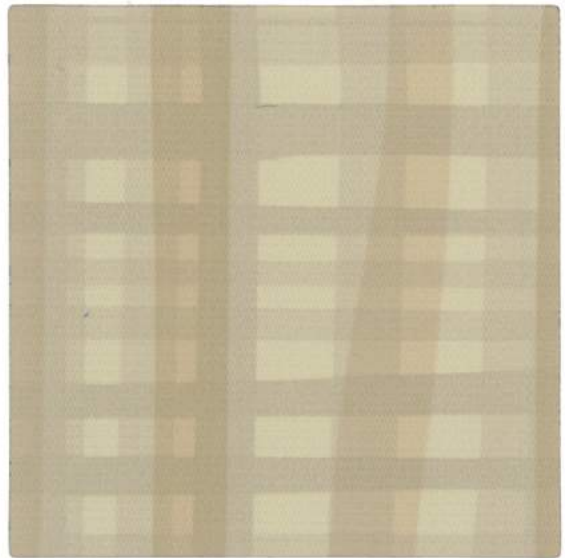


Lineage, 005 Eclipse

maharam



Stature, 003 Quiet



Fathom, 010 Moccasin



Stature, 001 Egret



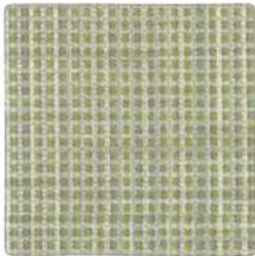
Stature, 002 Scone



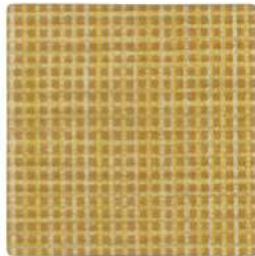
Fathom, 007 Gypsum



Fathom, 005 Eucalyptus



Stature, 009 Dill



Stature, 007 Spice



Fathom, 008 Biscuit



Fathom, 003 Rivulet



Stature, 011 Seawater



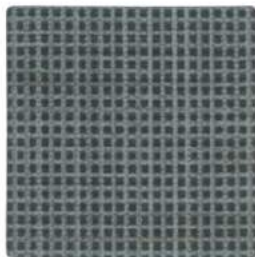
Stature, 004 Hearth



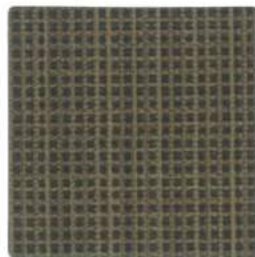
Fathom, 004 Willow



Fathom, 002 Delta



Stature, 014 Stealth



Stature, 015 Burnished



Fathom, 013 Ganache



Fathom, 001 Graphite



Strum, 010 Gourd



Bitmap, 003 Sparrow



Strum, 011 Wheat



Strum, 002 Ridge



Bitmap, 009 Silt



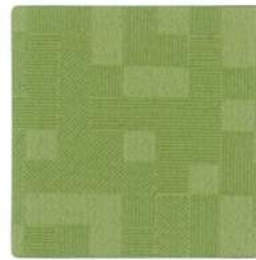
Bitmap, 002 Armadillo



Strum, 008 Abalone



Strum, 012 Lemongrass



Bitmap, 010 Aloe



Bitmap, 011 Copper



Strum, 007 Bur



Strum, 003 Twilight



Bitmap, 007 Freeze



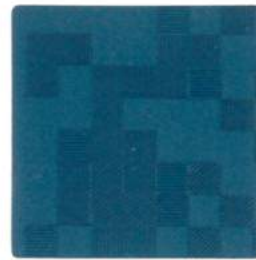
Bitmap, 012 Sienna



Strum, 006 Cabin



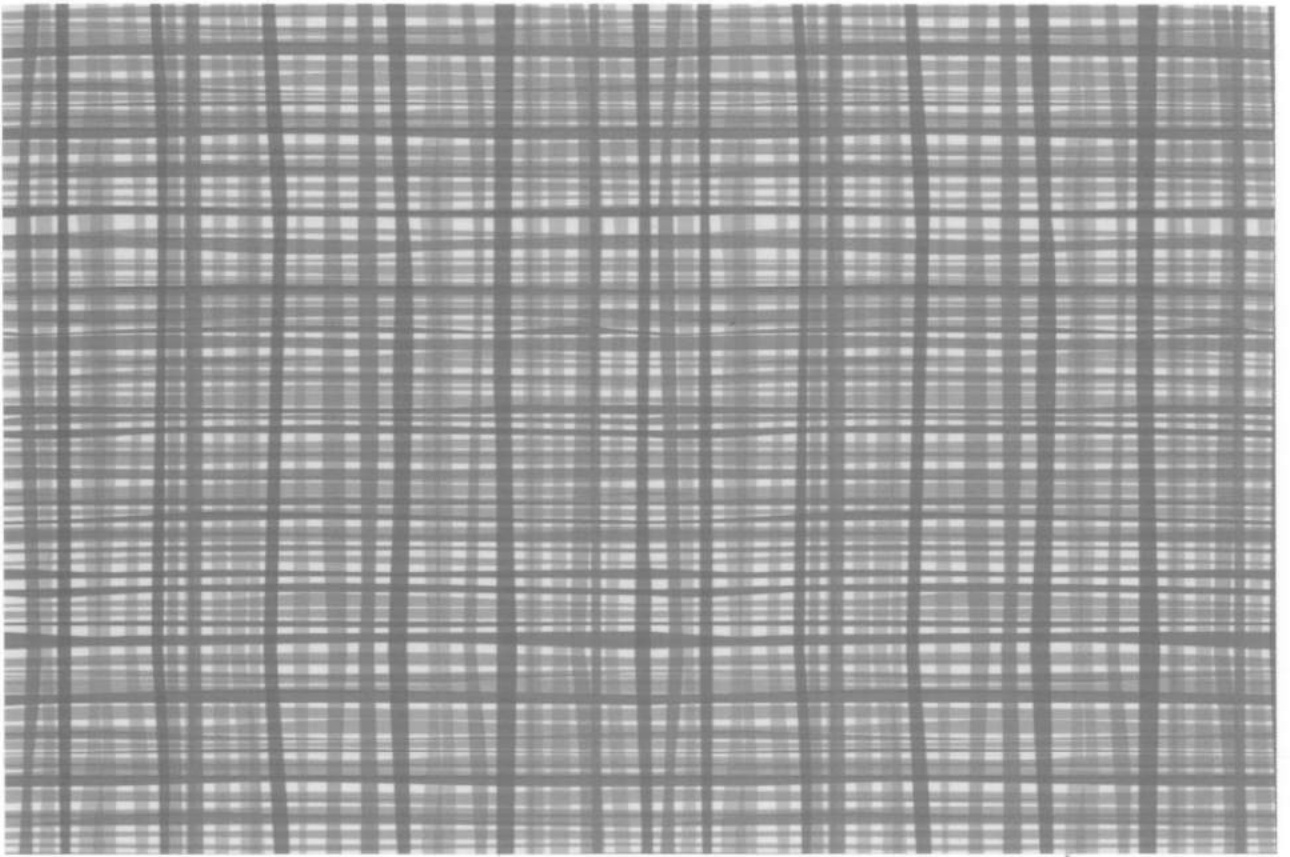
Strum, 004 Pigeon



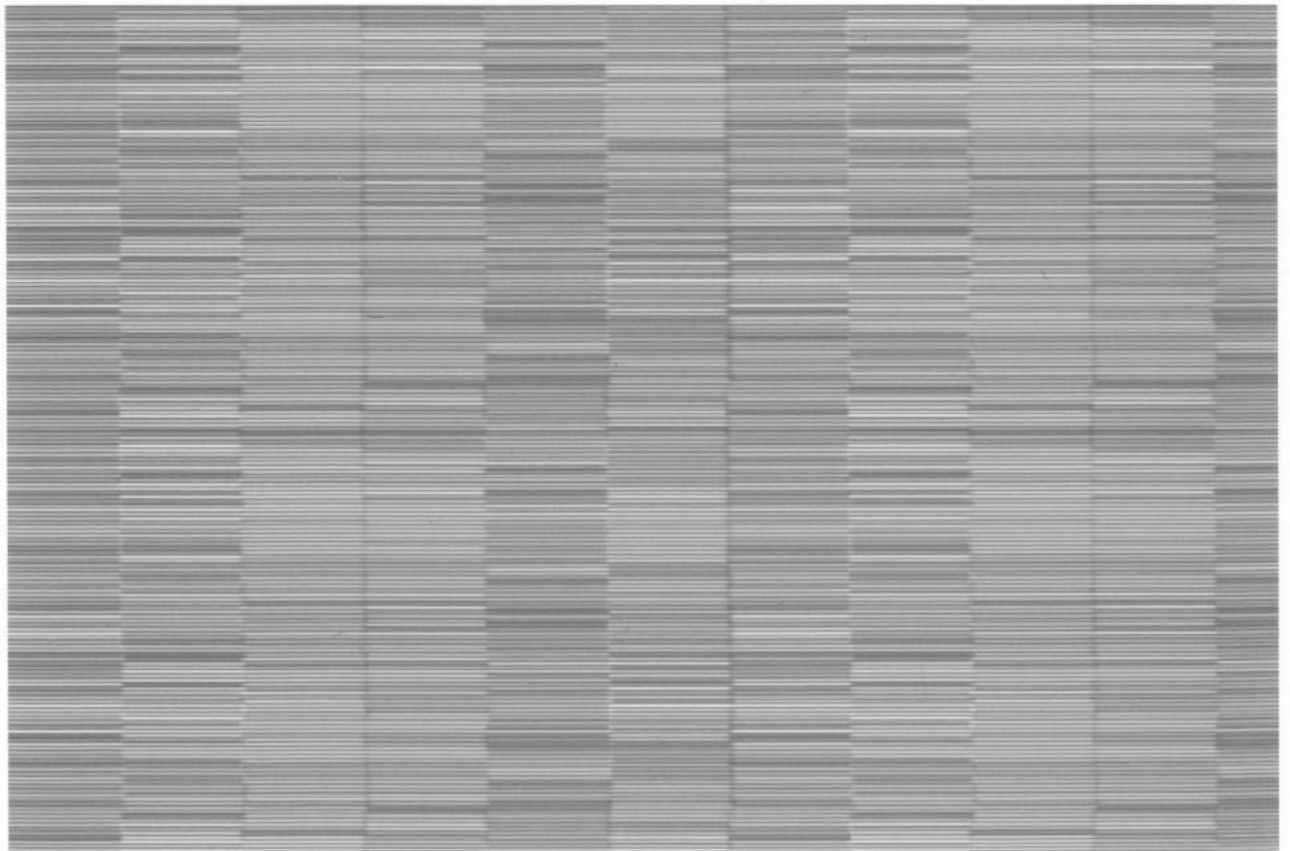
Bitmap, 006 Swift



Bitmap, 008 Topple









Fathom



Lineage

Photos are not to scale

Pattern	Content	Finish/Backing	Repeat	Abrasion
Bitmap 466066	100% Vinyl	Antimicrobial Stain Resistant, Polyester	27" V, 54" H	100,000+ 
Fathom 466013	100% Vinyl	Antimicrobial Stain Resistant, Polyester	18" V, 18" H	100,000+ 
Lineage 466127	100% Vinyl	Antimicrobial Stain Resistant, Polyester	8 3/4" V, 15 1/2" H	100,000+ 
Pitch 466186	100% Vinyl	Antimicrobial Stain and Ink Resistant, Polyester		100,000+ 
Stature 466180	100% Vinyl	Antimicrobial Stain and Ink Resistant, Polyester	9" V, 6 3/4" H	100,000+ 
Strum 466122	100% Polyurethane with Silane-Based Antimicrobial	Stain Resistant, Polyester/Cotton		100,000+ 

Performance Characteristics Impermeable, Stain Resistant, Antimicrobial, Cleanable with diluted bleach (all textiles), Ink Resistant (Pitch, Stature).

Width 54"

Flammability These textiles meet all appropriate flammability requirements, including California Bulletin #117 and NFPA 260, and are compatible with California Bulletin #133.

Maintenance W/B-Clean with water-based cleanser or diluted household bleach.

Quick Ship Orders of up to 60 yards per Quick Ship color ship the next business day.

Samples To order samples, call 800.645.3943 or visit maharam.com.

Note Additional colors are available in all patterns.

Reduced Environmental Impact Environmentally Improved Manufacturing Process: Heavy metal free dyes (Strum). Reformulated antimicrobial (Strum).

Reduced Emissions: Indoor air quality certified under the Greenguard for Children & Schools™ Program, complies with CA Section 01350 requirements for schools and accepted for CHPS Low-Emitting Materials credits. www.greenguard.org (Strum).

© 2013 Maharam



05/13

Sauder Education®

930 W. Barre Rd.
Archbold, OH 43502.0230
800.537.1530
419.446.4945 Fax
SauderEducation.com

maharam

800.645.3943

maharam.com

ED01731209