

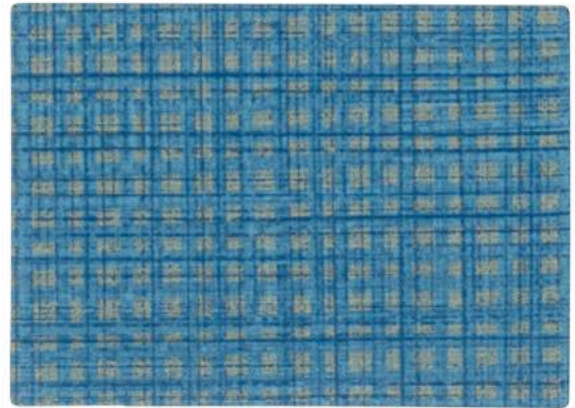
# Vinyl Solutions V

Aspen  
Bari  
Capreni  
Eli  
Martini  
Olympus  
Raffia  
Rivera  
Tendril  
Tessuto  
Ybor

Sauder Education®



Martini  
MAR 08 Gull



Raffia  
SCP 270 Academy



Olympus  
OLY 07 Savannah



Eli  
ELI 03 Ocean Floor



Tessuto  
TES 19 Marble



Raffia  
SCP 190 Premier



Capreni  
CAP 13 Stardust



Tendril  
TNR 200 Stellar



Raffia  
SCP 170 Director



Ybor  
YBO 01 Celery



Bari  
BAR 09 Mist



Tessuto  
TES 14 Capri



Raffia  
SCP 210 Silver Screen



Bari  
BAR 03 Glacier



Capreni  
CAP 02 Rosemary



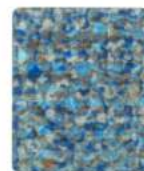
Tessuto  
TES 22 Lime



Eli  
ELI 15 Sunlit Sea



Tendril  
TNR 205 Splash



Bari  
BAR 07 Globe



Olympus  
OLY 10 Admiral



Martini  
MAR 11 Kiwi



Capreni  
CAP 01 Sage



Martini  
MAR 04 Sicily



Tessuto  
TES 18 Tyrrhenian



Martini  
MAR 07 Marine



Bari  
BAR 06 Flannel



Tessuto  
TES 27 Olive



Ybor  
YBO 17 Fig



Tendril  
TNR 209 Waterfall



Bari  
BAR 15 Electra



Eli  
ELI 20 Sapphire



Olympus  
OLY 14 Beluga



Bari  
BAR 13 Fern



Olympus  
OLY 13 Laurel



Rivera  
RIV 13 Moss



Tessuto  
TES 23 Amalfi



Tessuto  
TES 28 Marco



Rivera  
RIV 27 Black Oxide





Olympus  
OLY 01 Melon



Tendril  
TNR 207 Spice



Eli  
ELI 01 Dove



Tessuto  
TES 12 Winter



Raffia  
SCP 130 Flick



Ybor  
YBO 03 Slate



Tessuto  
TES 17 Seneca



Tendril  
TNR 206 River Rock



Bari  
BAR 05 Bisque



Eli  
ELI 16 River Rock



Olympus  
OLY 04 Dune



Rivera  
RIV 05 Ash



Ybor  
YBO 06 Pecan



Martini  
MAR 09 Turmeric



Bari  
BAR 01 Mellow



Martini  
MAR 05 Cliff



Bari  
BAR 04 Squash



Raffia  
SCP 150 Show



Tessuto  
TES 20 Malta



Tessuto  
TES 11 Cannella



Ybor  
YBO 10 Bamboo



Rivera  
RIV 24 Hazelnut



Martini  
MAR 02 Citrus



Capreni  
CAP 14 Chutney



Raffia  
SCP 290 Red Carpet



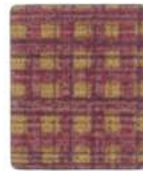
Rivera  
RIV 15 Chili



Capreni  
CAP 09 Tupelo



Olympus  
OLY 12 Manuka



Raffia  
SCP 110 Oscar



Tessuto  
TES 26 Zin



Bari  
BAR 10 Java



Martini  
MAR 12 Shore



Martini  
MAR 10 Haze



Bari  
BAR 11 Heather



Tessuto  
TES 31 Majesty



Capreni  
CAP 03 Mahogany



Olympus  
OLY 08 Shoya



Tessuto  
TES 30 Truffle

## Specifications and Technical Information

Pattern	Content	Abrasion Resistance	Properties
<b><i>Aspen by Patty Madden</i></b> <b><i>Bari by Patty Madden</i></b> <b><i>Capreni by Patty Madden</i></b> <b><i>Eli by Patty Madden</i></b> <b><i>Martini by Patty Madden</i></b> <b><i>Olympus by Patty Madden</i></b> <b><i>Rivera by Patty Madden</i></b> <b><i>Ybor by Patty Madden</i></b>	Contract Vinyl	100,000+ dr	Zeron® Advanced Soil and Stain resistant top coat Superior Abrasion Resistance Moisture/Fluid Barrier Protection Sulfide Stain Resistance Bacterial and Microbial Resistance
<b><i>Raffia</i></b>	Contract Vinyl	200,000+ dr	Advanced Soil and Stain resistant top coat Superior Abrasion Resistance Moisture/Fluid Barrier Protection Sulfide Stain Resistance Bacterial and Microbial Resistance
<b><i>Tendrill</i></b>	Contract Vinyl	1,300,000+ dr	Advanced Soil and Stain resistant top coat Superior Abrasion Resistance Moisture/Fluid Barrier Protection Sulfide Stain Resistance Bacterial and Microbial Resistance
<b><i>Tessuto</i></b>	Contract Vinyl	100,000+ dr	Advanced Soil and Stain resistant top coat Superior Abrasion Resistance Moisture/Fluid Barrier Protection Sulfide Stain Resistance Bacterial and Microbial Resistance

All patterns are 54" wide. Dye lots may vary slightly from samples shown.

All patterns meet or exceed the flammability\* requirements of:  
 California Technical Bulletin 117, Sec e.  
 Boston Fire Code-BFD 1X-1  
 Port Authority of NY and NJ  
 NFPA 260 Class 1  
 UFAC Class 1

These fabrics may contribute to compliance with California Technical Bulletin 133 when used in conjunction with other suitable components.  
 California Technical Bulletin 133 is a composite test of complete furniture units.

\*This term and any corresponding data refer to typical performance in the tests indicated and should not be construed to imply the behavior of this or any material under actual fire conditions.

For samples for specific projects or to view additional colors of all patterns, please visit [cfstinson.com](http://cfstinson.com)

## Sauder Education®

930 W. Barre Rd.  
 Archbold, OH 43502-0230

800.537.1530 ph.  
 419.446.4945 fax  
[SauderEducation.com](http://SauderEducation.com)

**c f s t i n s o n**  
*fabrics that work™*

800.841.6279 | [cfstinson.com](http://cfstinson.com)