

# Performance Solutions VII

Acrobat  
Detail  
Leaps & Bounds  
Posh  
Swivel  
Wyatt

Sauder Education®



Acrobat  
63090 Salto



Acrobat  
63092 Pivot



Swivel  
63120 Granite



Swivel  
63122 Red



Leaps Et Bounds  
63181 Stride



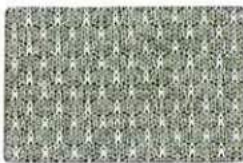
Leaps Et Bounds  
63174 Skip



Leaps Et Bounds  
63173 Bounce



Leaps Et Bounds  
63175 Hurdle



Detail  
63223 Fog



Detail  
63221 Koi



Detail  
63218 Poppy



Detail  
63222 Berry



Wyatt  
WYA33  
Wild Horse



Posh  
62980  
Foxy



Wyatt  
WYA29  
Cheyenne



Posh  
62991  
Bordeaux



Wyatt  
WYA24  
Rouge



Posh  
62986  
Flirt



Wyatt  
WYA20  
Saddle



Posh  
62987  
Spice



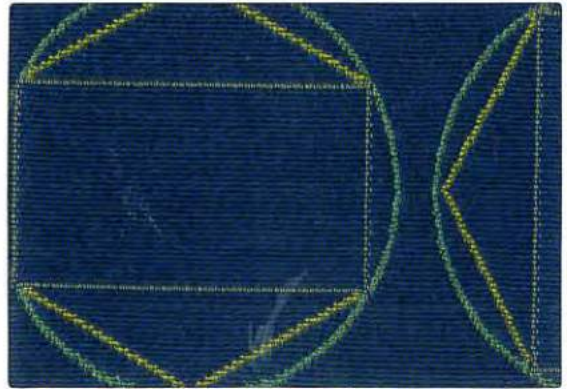
Acrobat  
63093 Bend



Acrobat  
63088 Spin



Swivel  
63128 Clove



Swivel  
63125 Cobalt



Leaps & Bounds  
63178 Spring



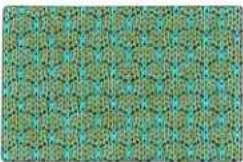
Leaps & Bounds  
63176 Propel



Leaps & Bounds  
63180 Hop



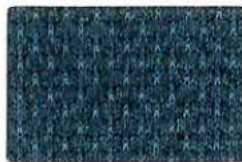
Leaps & Bounds  
63179 Climb



Detail  
63217 Dragonfly



Detail  
63224 Rocket



Detail  
63225 Jay



Detail  
63227 Jet



Wyatt  
WYA12  
Cowboy



Posh  
62989  
Lichen



Wyatt  
WYA31  
Sharpshooter



Posh  
62988  
Peridot



Wyatt  
WYA32  
Blue Jeans



Posh  
62990  
True Blue



Wyatt  
WYA30  
Bronco



Posh  
62993  
Sumatra

## Specifications and Technical Data

Pattern (Cleaning Code)	Soil and Stain Protective Finish	Content	Abrasion Resistance A (Wyzenbeek)	Flammability*
Acrobat (W-S)	Crypton® Green	50% Post Industrial Recycled Polyester, 33% Post Consumer Recycled Polyester, 17% Polyester	Exceeds 60,000 Double Rubs (Heavy Duty)	California Technical Bulletin 117, Section E UFAC Class 1 NFPA 260
Detail (W-S)	Enhanced Soil & Stain Resistant	99% Polyester, 1% Nylon	Exceeds 200,000 Double Rubs (Heavy Duty)	California Technical Bulletin 117, Section E UFAC Class 1 NFPA 260
Leaps & Bounds (W-S)	Enhanced Soil & Stain Resistant	61% Polyester, 39% Post Consumer Recycled Polyester	Exceeds 65,000 Double Rubs (Heavy Duty)	California Technical Bulletin 117, Section E UFAC Class 1 NFPA 260
Posh (W)	Crypton®	100% Polyester	Exceeds 100,000 Double Rubs (Heavy Duty)	California Technical Bulletin 117, Section E UFAC Class 1 NFPA 260
Swivel (W-S)	Enhanced Soil & Stain Resistant	74% Post Consumer Recycled Polyester, 26% Nylon	Exceeds 100,000 Double Rubs (Heavy Duty)	California Technical Bulletin 117, Section E UFAC Class 1 NFPA 260
Wyatt (W-S)	Inherent Soil & Stain Resistant	Polyurethane Face with Polyester Backing	Exceeds 100,000 Double Rubs (Heavy Duty)	California Technical Bulletin 117, Section E UFAC Class 1 NFPA 260

All fabrics shown are 54" wide.  
Dye lots may vary slightly from samples shown.

\*This term and any corresponding data refer to typical performance in the tests indicated and should not be construed to imply the behavior of this or any other material under actual fire conditions.  
All patterns shown may contribute to compliance with California Technical Bulletin 133 when used in conjunction with other suitable components.

**Note:** Patterns: Acrobat, Detail, Posh, and Wyatt include Moisture Barrier Protection. Moisture Barrier Protection prevents moisture from penetrating the material and damaging your furniture's underpadding. Moisture Barrier Protection can be added to Leaps & Bounds and Swivel for an upcharge.

### Cleaning and Maintenance

Please be sure to include these materials in a regular cleaning and maintenance program. Vacuum regularly to remove dirt and dust. Remove all soil and spills as quickly as possible. Wipe up any spills before they dry using a clean fabric cloth. If stain has dried refer to material cleaning code for further guidance.

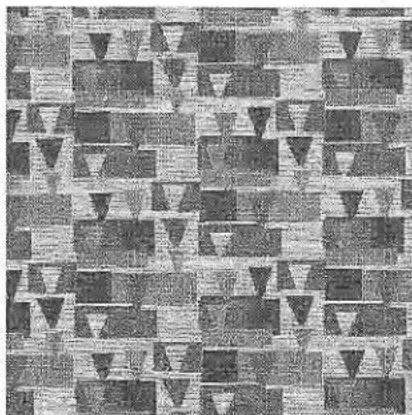
Patterns Acrobat, Detail, Leaps & Bounds, Swivel and Wyatt may be cleaned with diluted bleach solutions. For specific instructions please contact CF Stinson.

Exercise proper care in cleaning. This information is not a guarantee and does not relieve the user from the responsibility of the proper and safe use of these fabrics and all cleaning agents.

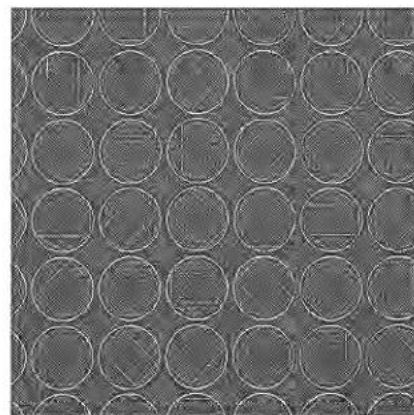
For additional cleaning information specific to a pattern contact CF Stinson at 800.841.6279 or visit [cfstinson.com](http://cfstinson.com).



Acrobat



Leaps & Bounds



Swivel

FOR SAMPLES FOR SPECIFIC PROJECTS, PLEASE CONTACT CF STINSON AT 800.841.6279 OR VISIT [CFSTINSON.COM](http://CFSTINSON.COM)

## Sauder Education®

930 W. Barre Rd.  
Archbold, OH 43502-0230

800.537.1530 ph.  
419.446.4945 fax  
[SauderEducation.com](http://SauderEducation.com)

## Stinson

C.F. Stinson, Inc.  
2849 Product Drive  
Rochester Hills, MI 48309

w [cfstinson.com](http://cfstinson.com)  
P 800 841 6279  
F 248 299 3884